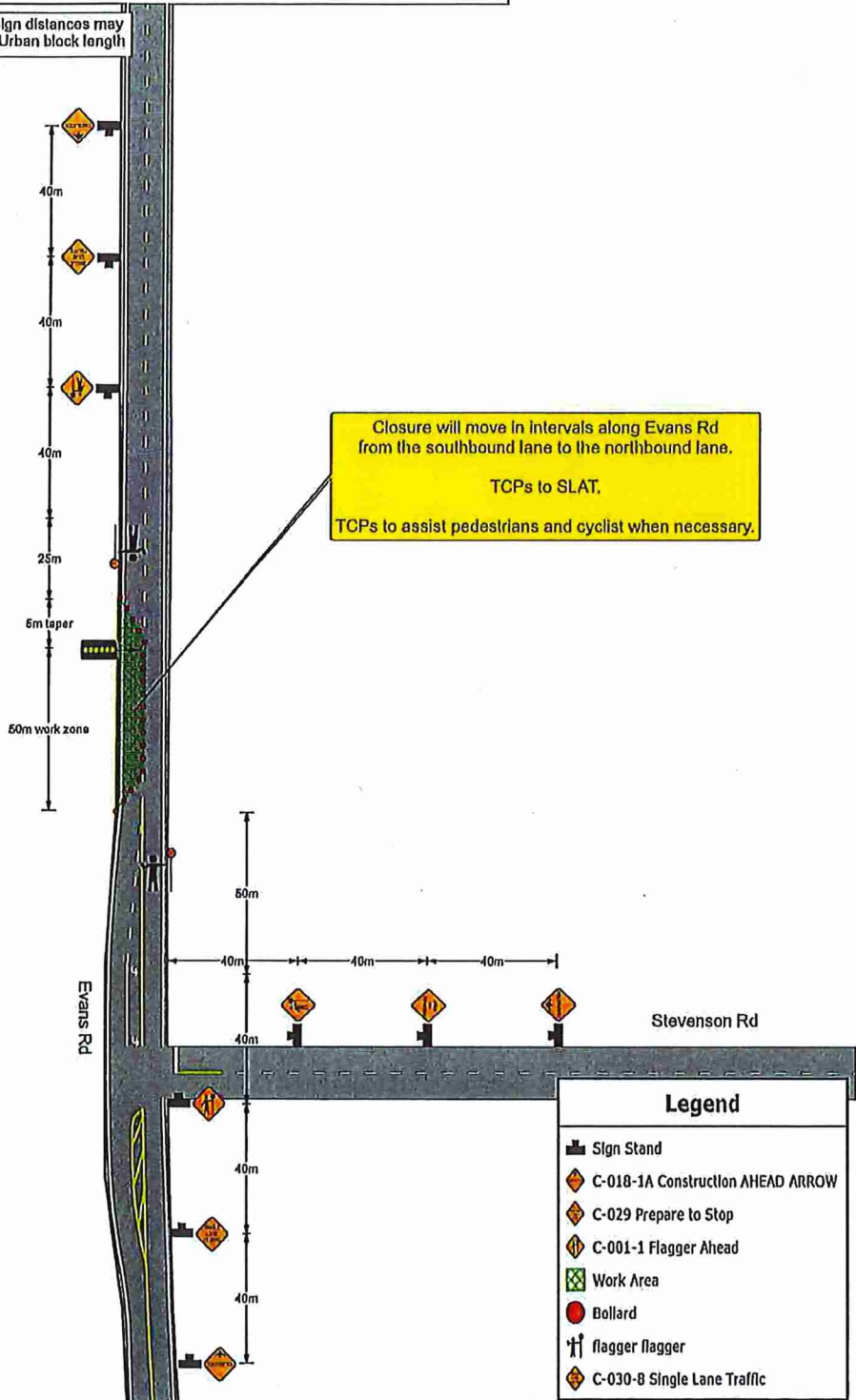
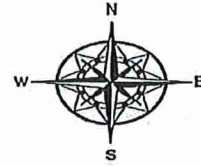


Advanced Warning Sign distances may be shortened due to Urban block length

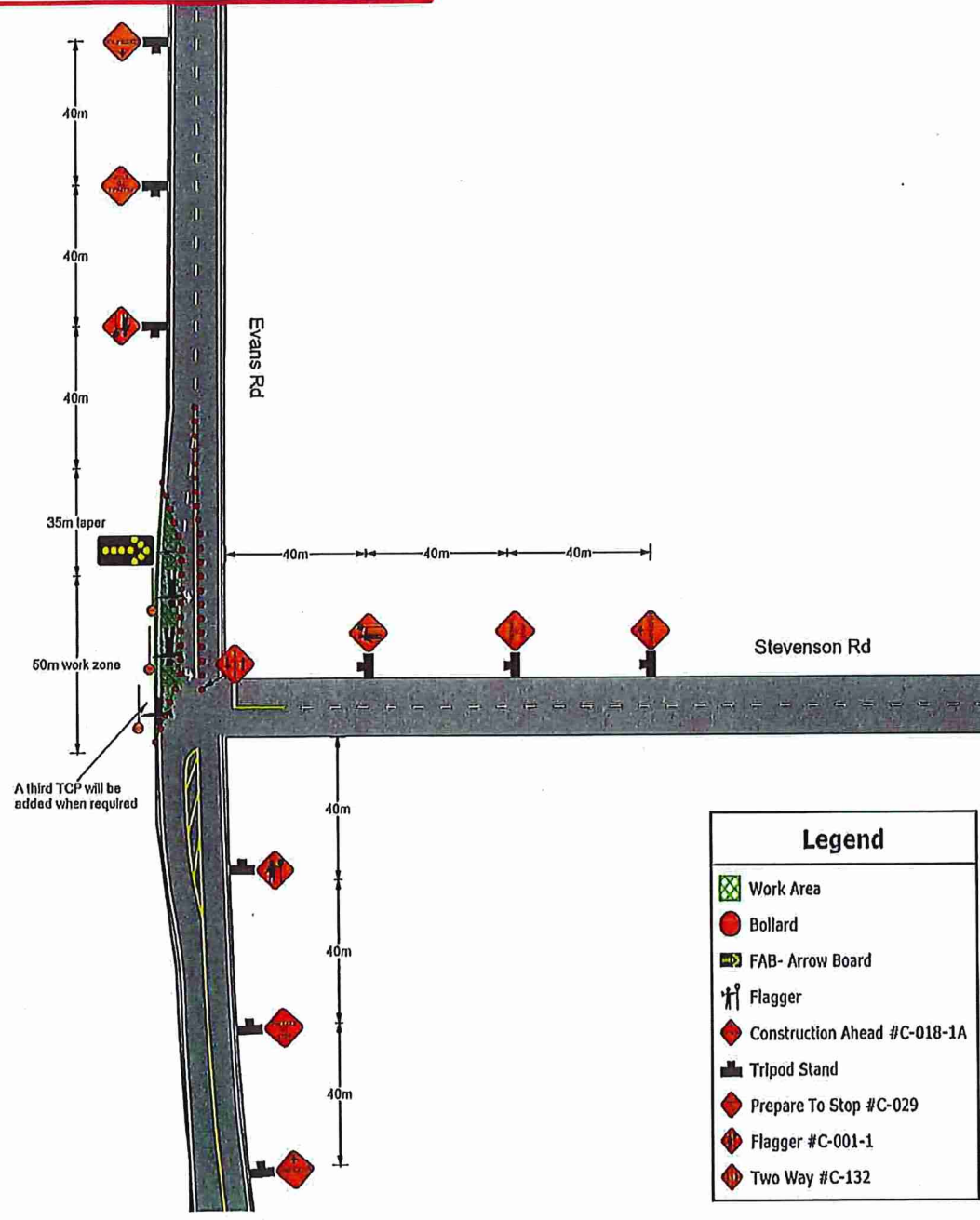


Closure will move in intervals along Evans Rd from the southbound lane to the northbound lane.
TCPs to SLAT.
TCPs to assist pedestrians and cyclist when necessary.

Legend	
	Sign Stand
	C-018-1A Construction AHEAD ARROW
	C-029 Prepare to Stop
	C-001-1 Flagger Ahead
	Work Area
	Bollard
	flagger flagger
	C-030-8 Single Lane Traffic



Notes:
- Advanced Warning Sign distances may be shortened due to urban block length.
-TCP to assist construction vehicles ingress/ egress.
-3.5m lane width to be maintained in both directions.
-TCP to assist pedestrians and cyclists when needed.



Legend	
	Work Area
	Bollard
	FAB- Arrow Board
	Flagger
	Construction Ahead #C-018-1A
	Prepare To Stop #C-029
	Flagger #C-001-1
	Two Way #C-132